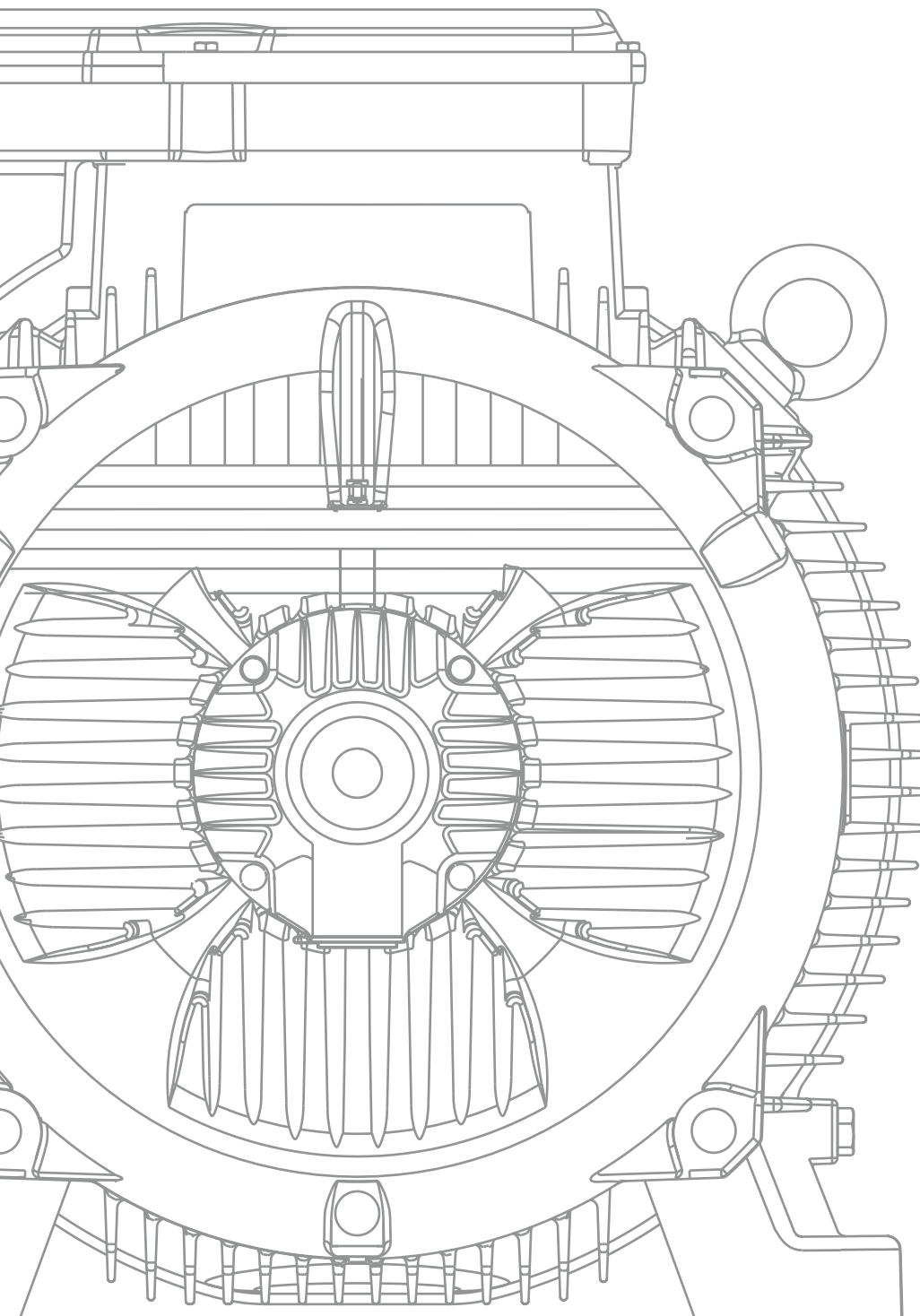




CATALOGUE

# IE2 - YE2 MOTORS 60HZ





# CONTENTS

## TECHNICAL DATA

SPEED 3600RPM 2-POLE 60HZ .....	3
SPEED 1800RPM 4-POLE 60HZ .....	4
SPEED 1200RPM 6-POLE 60HZ .....	5
SPEED 900RPM 8-POLE 60HZ .....	6

## MOUNTING AND OVERALL DIMENSIONS

IM B3 H63 - 355 .....	7
IM B5 H63 - 355.....	8
IM B35 H63 - 355 .....	9
IM V1 H160 - 355 .....	10

YE2 MOTOR



YE2 TECHNICAL DATA

SPEED 3600RPM 2-POLE 60HZ

Type	Rated power		Rated Speed (r/min)	Efficiency $\eta$ % (IE2) load at			Power factor ( $\cos\phi$ )	Rated current at 60Hz			Rated Torque Nm	Is/In (times)	Ts/Tn (times)	Tmax/Tn (times)	Weight kg
	kW	HP		100%	75%	50%		220V (A)	380V (A)	440V (A)					
YE2-631-2	0.18	0.25	2725	60.4	60.4	59.2	0.8	0.98	0.57	0.49	0.63	2.2	2.3	5.5	8.4
YE2-632-2	0.25	0.37	2725	64.8	64.8	63.5	0.81	1.25	0.72	0.62	0.88	2.2	2.3	5.5	8.7
YE2-711-2	0.37	0.5	2745	69.5	69.5	68.1	0.81	1.72	1.00	0.86	1.29	2.2	2.3	6.1	10
YE2-712-2	0.55	0.75	2745	74.1	74.1	72.6	0.82	2.38	1.38	1.19	1.91	2.3	2.3	6.1	10.5
YE2-801-2	0.75	1	2875	77.4	77.4	75.9	0.83	3.06	1.77	1.53	2.49	2.3	2.3	6.8	16
YE2-802-2	1.1	1.5	2875	79.6	79.6	78	0.84	4.32	2.50	2.16	3.65	2.3	2.3	7.1	17
YE2-90S-2	1.5	2	2890	81.3	81.3	79.7	0.84	5.76	3.34	2.88	4.96	2.3	2.3	7.3	20.3
YE2-90L-2	2.2	3	2890	83.2	83.2	81.5	0.85	8.16	4.73	4.08	7.27	2.3	2.3	7.6	23.2
YE2-100L-2	3	4	2891	84.6	84.6	82.9	0.87	10.7	6.19	5.35	9.91	2.2	2.3	7.8	33
YE2-112M-2	4	5.5	2914	85.8	85.8	84.1	0.88	13.9	8.05	6.95	13	2.2	2.3	8.1	41.1
YE2-132S1-2	5.5	7.5	2937	87.0	87	85.3	0.86	19.3	11.2	9.65	18	2.2	2.3	8.2	55.5
YE2-132S2-2	7.5	10	2940	88.1	88.1	86.3	0.88	25.4	14.7	12.7	24	2.2	2.3	7.8	61.7
YE2-160M1-2	11	15	2930	89.4	89.4	87.6	0.89	36.3	21.0	18.1	36	2.2	2.3	7.9	108
YE2-160M2-2	15	20	2930	90.3	90.3	88.5	0.89	49.0	28.4	24.5	49	2.2	2.3	7.9	122
YE2-160L-2	18.5	25	2937	90.9	90.9	89.1	0.89	60.0	34.7	30.0	60	2.2	2.3	8.0	140
YE2-180M-2	22	30	2940	91.3	91.3	89.5	0.88	71.9	41.6	35.9	71	2.2	2.3	8.1	178
YE2-200L1-2	30	40	2950	92.0	92	90.2	0.88	97.2	56.3	48.6	97	2.0	2.3	7.5	229
YE2-200L2-2	37	50	2950	92.5	92.5	90.7	0.89	118	68.3	59.0	120	2.0	2.3	7.5	249
YE2-225M-2	45	60	2960	92.9	92.9	91	0.89	143	82.7	71.4	145	2.2	2.3	7.5	322
YE2-250M-2	55	75	2965	93.2	93.2	91.3	0.9	172	99.6	86.0	177	2.2	2.3	7.6	401
YE2-280S-2	75	100	2970	93.8	93.8	91.9	0.9	233	135	117	241	1.8	2.3	6.9	533
YE2-280M-2	90	125	2970	94.1	94.1	92.2	0.91	276	160	138	289	1.8	2.3	6.9	568
YE2-315S-2	110	150	2975	94.3	94.3	92.4	0.91	336	195	168	353	1.8	2.2	7.0	914
YE2-315M-2	132	180	2975	94.6	94.6	92.7	0.91	402	233	201	424	1.8	2.2	7.0	1029
YE2-315L1-2	160	200	2975	94.8	94.8	92.9	0.92	481	279	241	514	1.8	2.2	7.1	1067
YE2-315L2-2	185	250	2975	95.0	95.0	93.1	0.92	556	322	278	594	1.8	2.2	7.1	1158
YE2-315L3-2	200	270	2975	95.0	95.0	93.1	0.92	601	348	300	642	1.8	2.2	7.1	1194
YE2-355M1-2	220	300	2980	95.0	95.0	93.1	0.92	661	382	330	705	1.6	2.2	7.1	1558
YE2-355M2-2	250	340	2980	95.0	95.0	93.1	0.92	751	435	375	801	1.6	2.2	7.1	1597
YE2-355L1-2	280	430	2980	95.0	95.0	93.1	0.92	841	487	420	897	1.6	2.2	7.2	1658
YE2-355L2-2	315	430	2980	95.0	95.0	93.1	0.92	946	548	473	1009	1.6	2.2	7.2	1702

# YE2 MOTOR



## YE2 TECHNICAL DATA

### SPEED 1800RPM 4-POLE 60HZ

Type	Rated power		Rated Speed (r/min)	Efficiency $\eta$ % (IE2) load at			Power factor ( $\cos\phi$ )	Rated current at 60Hz			Rated Torque Nm	Is/In (times)	Ts/Tn (times)	Tmax/Tn (times)	Weight kg
	kW	HP		100%	75%	50%		220V (A)	380V (A)	440V (A)					
YE2-631-4	0.12	0.18	1315	59.1	59.1	57.9	0.72	0.74	0.43	0.37	0.9	2.1	2.2	4.4	8.7
YE2-632-4	0.18	0.25	1315	64.7	64.7	63.4	0.73	1.00	0.58	0.50	1.3	2.1	2.2	4.4	9.1
YE2-711-4	0.25	0.37	1335	68.5	68.5	67.1	0.74	1.29	0.75	0.65	1.8	2.1	2.2	5.2	131
YE2-712-4	0.37	0.5	1335	72.7	72.7	71.2	0.75	1.78	1.03	0.89	2.6	2.1	2.2	5.2	14.5
YE2-80M1-4	0.55	0.75	1400	77.1	77.1	75.6	0.75	2.50	1.45	1.25	3.8	2.3	2.3	5.2	14.7
YE2-80M2-4	0.75	1	1400	79.6	79.6	78	0.76	3.25	1.88	1.63	5.1	2.3	2.3	6.4	15.4
YE2-90S-4	1.1	1.5	1440	81.4	81.4	79.8	0.77	4.61	2.67	2.30	7.3	2.3	2.3	6.6	20.5
YE2-90L-4	1.5	2	1445	82.8	82.8	81.1	0.77	6.17	3.57	3.09	9.9	2.3	2.3	6.7	24.6
YE2-100L1-4	2.2	3	1440	84.3	84.3	82.6	0.81	8.46	4.90	4.23	15	2.3	2.3	7.3	34.6
YE2-100L2-4	3	4	1440	85.5	85.5	83.8	0.82	11.2	6.50	5.61	20	2.3	2.3	7.5	35
YE2-112M-4	4	5.5	1445	86.6	86.6	84.9	0.82	14.8	8.56	7.39	26	2.3	2.3	7.5	51.5
YE2-132S-4	5.5	7.5	1455	87.7	87.7	85.9	0.83	19.8	11.5	9.91	36	2	2.3	7.5	62.8
YE2-132M-4	7.5	10	1455	88.7	88.7	86.9	0.84	26.4	15.3	13.2	49	2	2.3	7.3	81
YE2-160M-4	11	15	1460	89.8	89.8	88	0.84	38.3	22.2	19.1	72	2	2.3	7.4	114
YE2-160L-4	15	20	1460	90.6	90.6	88.8	0.85	51.1	29.6	25.6	98	2	2.3	7.5	136
YE2-180M-4	18.5	25	1470	91.2	91.2	89.4	0.86	61.9	35.8	31.0	120	2	2.3	7.6	176
YE2-180L-4	22	30	1470	91.6	91.6	89.8	0.86	73.3	42.4	36.6	143	2.1	2.3	7.7	196
YE2-200L-4	30	40	1470	92.3	92.3	90.5	0.86	99.2	57.4	49.6	195	2	2.3	7.7	259
YE2-225S-4	37	50	1480	92.7	92.7	90.8	0.87	120	69.7	60.2	239	2	2.3	7.1	302
YE2-225M-4	45	60	1480	93.1	93.1	91.2	0.87	146	84.4	72.9	290	2	2.3	7.3	329
YE2-250M-4	55	75	1480	93.5	93.5	91.6	0.87	177	102.7	88.7	355	1.8	2.3	7.3	418
YE2-280S-4	75	100	1485	94.0	94	92.1	0.88	238	138	119	482	1.8	2.3	7.3	546
YE2-280M-4	90	125	1485	94.2	94.2	92.3	0.88	285	165	142	579	1.8	2.3	6.8	638
YE2-315S-4	110	150	1485	94.5	94.5	92.6	0.89	343	199	172	707	1.8	2.2	6.9	939
YE2-315M-4	132	180	1485	94.7	94.7	92.8	0.89	411	238	206	849	1.8	2.2	6.9	1033
YE2-315L1-4	160	200	1485	94.9	94.9	93	0.9	492	285	246	1029	1.8	2.2	6.9	1126
YE2-315L2-4	185	250	1485	95.1	95.1	93.2	0.9	567	328	284	1190	1.8	2.2	6.9	1180
YE2-315L3-4	200	270	1485	95.1	95.1	93.2	0.9	613	355	307	1286	1.8	2.2	6.9	1230
YE2-355M1-4	220	300	1490	95.1	95.1	93.2	0.9	675	391	337	1410	1.8	2.2	6.9	1605
YE2-355M2-4	250	340	1490	95.1	95.1	93.2	0.9	767	444	383	1602	1.8	2.2	6.9	1670
YE2-355L1-4	280	375	1490	95.1	95.1	93.2	0.9	859	497	429	1795	1.8	2.2	6.9	1785
YE2-355L2-4	315	430	1490	95.1	95.1	93.2	0.9	966	559	483	2019	1.8	2.2	6.9	1848

## YE2 MOTOR



## YE2 TECHNICAL DATA

SPEED 1200RPM 6-POLE 60HZ

Type	Rated power		Rated Speed (r/min)	Efficiency $\eta$ % (IE2) load at			Power factor ( $\cos\phi$ )	Rated current at 60Hz			Rated Torque Nm	Is/In (times)	Ts/Tn (times)	Tmax/Tn (times)	Weight kg
	kW	HP		100%	75%	50%		220V (A)	380V (A)	440V (A)					
YE2-632-6	0.12	0.18	850	50.6	50.6	49.6	0.6	1.04	0.60	0.52	1.35	1.8	1.9	3.5	8.9
YE2-711-6	0.18	0.25	850	56.6	56.6	55.5	0.66	1.26	0.73	0.63	2.02	1.9	2.0	4.0	9.5
YE2-712-6	0.25	0.37	850	61.6	61.6	60.4	0.68	1.57	0.91	0.78	2.81	1.9	2.0	4.0	10
YE2-801-6	0.37	0.5	885	67.6	67.6	66.2	0.7	2.05	1.19	1.03	3.99	1.9	2.0	4.7	13.2
YE2-802-6	0.55	0.75	885	73.1	73.1	71.6	0.72	2.74	1.59	1.37	5.94	1.9	2.1	4.7	14.4
YE2-90S-6	0.75	1	934	75.9	75.9	74.4	0.72	3.60	2.09	1.80	7.67	2.0	2.1	5.8	23.3
YE2-90L-6	1.1	1.5	945	78.1	78.1	76.5	0.72	5.13	2.97	2.57	11	2.0	2.1	5.9	26.6
YE2-100L-6	1.5	2	945	79.8	79.8	78.2	0.75	6.58	3.81	3.29	15	2.0	2.1	5.9	36.2
YE2-112M-6	2.2	3	960	81.8	81.8	80.2	0.76	9.29	5.38	4.64	22	2.0	2.1	6.2	51.2
YE2-132S-6	3	4	964	83.3	83.3	81.6	0.76	12.4	7.20	6.22	30	2.0	2.1	6.4	56.1
YE2-132M1-6	4	5.5	965	84.6	84.6	82.9	0.76	16.3	9.45	8.16	40	2.0	2.1	6.6	71.4
YE2-132M2-6	5.5	7.5	965	86.0	86	84.3	0.77	21.8	12.6	10.9	54	2.0	2.1	6.8	73.7
YE2-160M-6	7.5	10	970	87.2	87.2	85.5	0.78	28.9	16.8	14.5	74	2.0	2.1	6.8	112
YE2-160L-6	11	15	970	88.7	88.7	86.9	0.78	41.7	24.2	20.9	108	2.0	2.1	6.9	133
YE2-180L-6	15	20	975	89.7	89.7	87.9	0.81	54.2	31.4	27.1	147	2.0	2.1	7.3	183
YE2-200L1-6	18.5	25	980	90.4	90.4	88.6	0.81	66.3	38.4	33.2	180	2.0	2.1	7.2	224
YE2-200L2-6	22	30	980	90.9	90.9	89.1	0.83	76.5	44.3	38.3	214	2.0	2.1	7.3	240
YE2-225M-6	30	40	980	91.7	91.7	89.9	0.84	102	59.2	51.1	292	2.0	2.1	6.8	285
YE2-250M-6	37	50	980	92.2	92.2	90.4	0.86	122	70.9	61.2	361	2.0	2.1	7.0	389
YE2-280S-6	45	60	980	92.7	92.7	90.8	0.86	148	85.8	74.1	439	2.0	2.0	7.2	489
YE2-280M-6	55	75	980	93.1	93.1	91.2	0.86	180	104	90.1	536	2.0	2.0	7.2	550
YE2-315S-6	75	100	985	93.7	93.7	91.8	0.86	244	141	122	727	2.0	2.0	6.5	838
YE2-315M-6	90	125	985	94.0	94	92.1	0.86	292	169	146	873	2.0	2.0	6.6	941
YE2-315L1-6	110	150	985	94.3	94.3	92.4	0.86	356	206	178	1066	2.0	2.0	6.6	986
YE2-315L2-6	132	180	985	94.6	94.6	92.7	0.87	421	244	210	1280	2.0	2.0	6.6	1121
YE2-355M1-6	160	200	990	94.8	94.8	92.9	0.88	503	291	252	1543	2.0	2.0	6.7	1650
YE2-355M2-6	200	270	990	95.0	95	93.1	0.88	628	363	314	1929	2.0	2.0	6.8	1752
YE2-355L1-6	220	300	990	95.0	95	93.1	0.88	691	400	345	2122	2.0	2.0	6.8	1920
YE2-355L2-6	250	340	990	95.0	95	93.1	0.88	785	454	392	2412	2.0	2.0	6.8	1990

## YE2 MOTOR



## YE2 TECHNICAL DATA

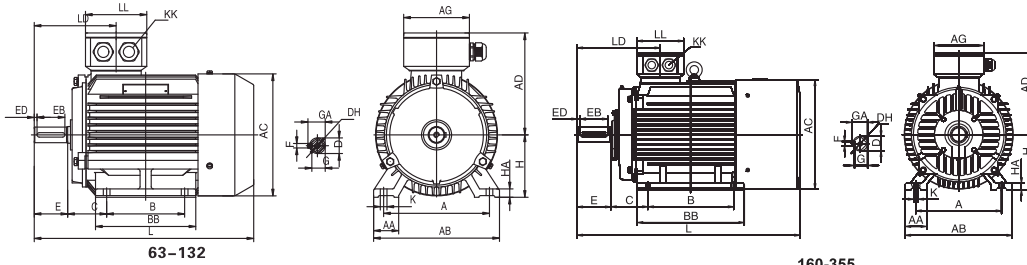
### SPEED 900RPM 8-POLE 60HZ

Type	Rated power		Rated Speed (r/min)	Efficiency $\eta$ % (IE2) load at			Power factor (cos $\phi$ )	Rated current at 60Hz			Rated Torque Nm	Is/In (times)	Ts/Tn (times)	Tmax/Tn (times)	Weight kg
	kW	HP		100%	75%	50%		220V (A)	380V (A)	440V (A)					
YE2-712-8	0.12	0.18	605	39.8	39.8	39	0.57	1.39	0.80	0.69	1.9	1.8	1.9	2.8	9.6
YE2-801-8	0.18	0.25	650	45.9	45.9	45	0.61	1.69	0.98	0.84	2.6	1.8	1.9	3.3	12.7
YE2-802-8	0.25	0.37	650	50.6	50.6	49.6	0.61	2.13	1.23	1.06	3.7	1.8	1.9	3.3	14.5
YE2-90S-8	0.37	0.5	675	56.1	56.1	55	0.61	2.84	1.64	1.42	5.2	1.8	1.9	4.0	24.5
YE2-90L-8	0.55	0.75	675	61.7	61.7	60.5	0.61	3.84	2.22	1.92	7.8	1.8	2.0	4.0	25.8
YE2-100L1-8	0.75	1	685	66.2	66.2	64.9	0.67	4.44	2.57	2.22	10	1.8	2.0	4.0	34.5
YE2-100L2-8	1.1	1.5	685	70.8	70.8	69.4	0.69	5.91	3.42	2.95	15	1.8	2.0	5.0	36
YE21-112M-8	1.5	2	695	74.1	74.1	72.6	0.7	7.59	4.39	3.79	21	1.8	2.0	5.0	50
YE2-132S-8	2.2	3	710	77.6	77.6	76	0.71	10.5	6.07	5.24	30	1.8	2.0	6.0	65
YE2-132M-8	3	4	710	80.0	80	78.4	0.73	13.5	7.81	6.74	40	1.8	2.0	6.0	81
YE2-160M1-8	4	5.5	725	81.9	81.9	80.3	0.73	17.6	10.2	8.78	53	1.9	2.0	6.0	92
YE2-160M2-8	5.5	7.5	725	83.8	83.8	82.1	0.74	23.3	13.5	11.6	72	1.9	2.0	6.0	115
YE2-160L-8	7.5	10	725	85.3	85.3	83.6	0.75	30.8	17.8	15.4	99	1.9	2.0	6.0	124
YE2-180L-8	11	15	735	86.9	86.9	85.2	0.75	44.3	25.6	22.1	143	2.0	2.0	6.5	180
YE2-200L-8	15	20	730	88.0	88	86.2	0.76	58.9	34.1	29.4	196	2.0	2.0	6.6	213
YE2-225S-8	18.5	25	730	88.6	88.6	86.8	0.76	72.1	41.7	36.1	242	1.9	2.0	6.6	263
YE2-225M-8	22	30	730	89.1	89.1	87.3	0.78	83.1	48.1	41.5	288	1.9	2.0	6.6	301
YE2-250M-8	30	40	735	89.8	89.8	88	0.79	111	64.3	55.5	390	1.9	2.0	6.5	394
YE2-280S-8	37	50	735	90.3	90.3	88.5	0.79	136	78.8	68.1	481	1.9	2.0	6.6	480
YE2-280M-8	45	60	735	90.7	90.7	88.9	0.79	165	95.4	82.4	585	1.9	2.0	6.6	539
YE2-315S-8	55	75	735	91.0	91	89.2	0.81	196	113	97.9	715	1.8	2.0	6.6	820
YE2-315M-8	75	100	735	91.6	91.6	89.8	0.81	265	154	133	974	1.8	2.0	6.2	916
YE2-315L1-8	90	125	735	91.9	91.9	90.1	0.82	313	181	157	1169	1.8	2.0	6.4	1000
YE2-315L2-8	110	150	735	92.3	92.3	90.5	0.82	381	221	191	1429	1.8	2.0	6.4	1015
YE2-355M1-8	132	180	740	92.6	92.6	90.7	0.82	456	264	228	1704	1.8	2.0	6.4	1715
YE2-355M2-8	160	220	740	93.0	93	91.1	0.82	551	319	275	2065	1.8	2.0	6.4	1866
YE2-355L1-8	200	270	740	93.5	93.5	91.6	0.83	676	392	338	2581	1.8	2.0	6.4	1948
YE2-355L2-8	220	300	740	93.5	93.5	91.6	0.83	744	431	372	2839	1.8	2.0	6.4	1996

**YE2 MOTOR**



**YE2** MOUNTING AND OVERALL DIMENSIONS  
**IM B3 H63-355**



63-132

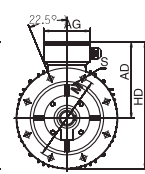
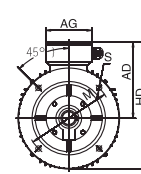
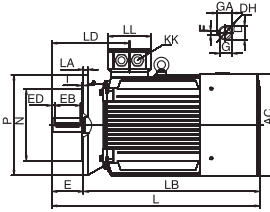
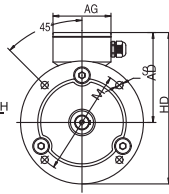
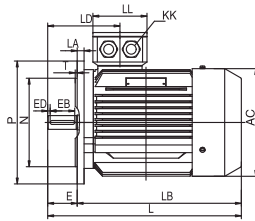
160-355

TYPE	POLE	A	AA	AB	AC	AD	AG	B	BB	C	D	DH	E	EB	ED	F	G	GA	H	HA	K	KK	L	LD	LL
63	2,4,6	100	30	130	120	113	94	80	110	40	11	M4X12	23	16	3.5	4	8.5	12.5	63	8	4-Ø7	1-M20X1.5	217	80.5	94
71	2,4,6	112	32	144	136	119	94	90	120	45	14	M5X12	30	25	2.5	5	11	16	71	8	4-Ø7	1-M20X1.5	242	99	94
80	2,4,6,8	125	34	160	155.4	131	94	100	130	50	19	M6X16	40	30	5	6	15.5	21.5	80	10	4-Ø10	1-M25X1.5	284	112	94
90S	2,4,6,8	140	36	176	175.4	148	102	100	130	56	24	M8X19	50	40	5	8	20	27	90	12	4-Ø10	1-M25X1.5	318	130	102
90L	2,4,6,8	140	36	176	175.4	148	102	125	155	56	24	M8X19	50	40	5	8	20	27	90	12	4-Ø10	1-M25X1.5	343	130	102
100L	2,4,6,8	160	40	200	195.4	162	102	140	176	63	28	M10X22	60	50	5	8	24	31	100	14	4-Ø12	1-M32X1.5	370	139	102
112M	2,4,6,8	190	45	226	219.4	183	118	140	180	70	28	M10X22	60	50	5	8	24	31	112	15	4-Ø12	2-M32X1.5	394	147	110
132S	2,4,6,8	216	55	262	258.4	203	118	140	186	89	38	M12X28	80	65	7.5	10	33	41	132	18	4-Ø12	2-M32X1.5	456	172	110
132M	4,6,8	216	55	262	258.4	203	118	178	224	89	38	M12X28	80	65	7.5	10	33	41	132	18	4-Ø12	2-M32X1.5	494	172	110
160M	2,4,6,8	254	65	314	314	251	162	210	260	108	42	M16X36	110	90	10	12	37	45	160	20	4-Ø14.5	2-M40X1.5	608	256	152
160L	2,4,6,8	254	65	314	314	251	162	254	304	108	42	M16X36	110	90	10	12	37	45	160	20	4-Ø14.5	2-M40X1.5	652	256	152
180M	2,4,8	279	70	349	355	267	162	241	311	121	48	M16X36	110	90	10	14	42.5	51.5	180	22	4-Ø14.5	2-M40X1.5	688	271	152
180L	4,6,8	279	70	349	355	267	162	279	349	121	48	M16X36	110	90	10	14	42.5	51.5	180	22	4-Ø14.5	2-M40X1.5	726	271	152
200L	2,4,6,8	318	70	388	397	299	210	305	369	133	55	M20X42	110	100	5	16	49	59	200	25	4-Ø18.5	2-M50X1.5	771	296	190
225S	4,8	356	75	431	446	322	210	286	368	149	60	M20X42	140	125	7.5	18	53	64	225	28	4-Ø18.5	2-M50X1.5	824	329	190
225M	2	356	75	431	446	322	210	311	393	149	55	M20X42	110	100	5	16	49	59	225	28	4-Ø18.5	2-M50X1.5	819	299	190
225M	4,6,8	356	75	431	446	322	210	311	393	149	60	M20X42	140	125	7.5	18	53	64	225	28	4-Ø18.5	2-M50X1.5	849	329	190
250M	2	406	80	484	485	358	248	349	445	168	60	M20X42	140	125	7.5	18	53	64	250	30	4-Ø24	2-M63X1.5	910	347	218
250M	4,6,8	406	80	484	485	358	248	349	445	168	65	M20X42	140	125	7.5	18	58	69	250	30	4-Ø24	2-M63X1.5	910	347	218
280S	2	457	85	542	547	387	248	368	485	190	65	M20X42	140	125	7.5	18	58	69	280	35	4-Ø24	2-M63X1.5	982	355.5	218
280S	4,6,8	457	85	542	547	387	248	368	485	190	75	M20X42	140	125	7.5	20	67.5	79.5	280	35	4-Ø24	2-M63X1.5	982	355.5	218
280M	2	457	85	542	547	387	248	419	536	190	65	M20X42	140	125	7.5	18	58	69	280	35	4-Ø24	2-M63X1.5	1033	355.5	218
280M	4,6,8	457	85	542	547	387	248	419	536	190	75	M20X42	140	125	7.5	20	67.5	79.5	280	35	4-Ø24	2-M63X1.5	1033	355.5	218
315S	2	508	120	628	620	527	320	406	570	216	65	M20X42	140	125	7.5	18	58	69	315	45	4-Ø28	2-M63X1.5	1178	397	280
315S	4,6,8,10	508	120	628	620	527	320	406	570	216	80	M20X42	170	160	5	22	71	85	315	45	4-Ø28	2-M63X1.5	1208	427	280
315M	2	508	120	628	620	527	320	457	680	216	65	M20X42	140	125	7.5	18	58	69	315	45	4-Ø28	2-M63X1.5	1288	397	280
315M	4,6,8,10	508	120	628	620	527	320	457	680	216	80	M20X42	170	160	5	22	71	85	315	45	4-Ø28	2-M63X1.5	1318	427	280
315L	2	508	120	628	620	527	320	508	680	216	65	M20X42	140	125	7.5	18	58	69	315	45	4-Ø28	2-M63X1.5	1288	397	280
315L	4,6,8,10	508	120	628	620	527	320	508	680	216	80	M20X42	170	160	5	22	71	85	315	45	4-Ø28	2-M63X1.5	1318	427	280
355M	2	610	116	726	698	642	380	560	750	254	75	M20X50	140	130	5	20	67.5	79.5	355	52	6-Ø28	2-M63X1.5	1486	414	330
355M	4,6,8,10	610	116	726	698	642	380	560	750	254	95	M24X50	170	160	5	25	86	100	355	52	6-Ø28	2-M63X1.5	1516	444	330
355L	2	610	116	726	698	642	380	630	750	254	75	M20X50	140	130	5	20	67.5	79.5	355	52	6-Ø28	2-M63X1.5	1486	414	330
355L	4,6,8,10	610	116	726	698	642	380	630	750	254	95	M24X50	170	160	5	25	86	100	355	52	6-Ø28	2-M63X1.5	1516	444	330

**YE2 MOTOR**



**YE2 MOUNTING AND OVERALL DIMENSIONS**  
**IM B5 H63-355**



63-132

160-200

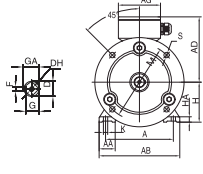
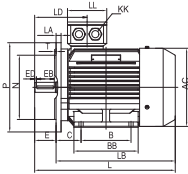
225-355

TYPE	POLE	AC	AD	AG	D	DH	E	EB	ED	F	G	GA	HD	KK	L	LA	LB	LD	LL	M	N	P	S	T
63	2,4,6	120	113	94	11	M4X12	23	16	3.5	4	8.5	12.5	183	1-M20X1.5	217	10	194	80.5	94	115	95	140	10	3
71	2,4,6	136	119	94	14	M5X12	30	25	2.5	5	11	16	199	1-M20X1.5	242	10	212	99	94	130	110	160	10	3.5
80	2,4,6,8	155.4	131	94	19	M6X16	40	30	5	6	15.5	21.5	231	1-M25X1.5	284	12	244	112	94	165	130	200	12	3.5
90S	2,4,6,8	175.4	148	102	24	M8X19	50	40	5	8	20	27	248	1-M25X1.5	318	12	258	130	102	165	130	200	12	3.5
90L	2,4,6,8	175.4	148	102	24	M8X19	50	40	5	8	20	27	248	1-M25X1.5	343	12	283	130	102	165	130	200	12	3.5
100L	2,4,6,8	195.4	162	102	28	M10X22	60	50	5	8	24	31	287	1-M32X1.5	370	13	320	139	102	215	180	250	14.5	4
112M	2,4,6,8	219.4	183	118	28	M10X22	60	50	5	8	24	31	308	2-M32X1.5	394	14	334	147	110	215	180	250	14.5	4
132S	2,4,6,8	258.4	203	118	38	M12X28	80	65	7.5	10	33	41	353	2-M32X1.5	456	14	390	172	110	265	230	300	14.5	4
132M	4,6,8	258.4	203	118	38	M12X28	80	65	7.5	10	33	41	353	2-M32X1.5	494	14	428	172	110	265	230	300	14.5	4
160M	2,4,6,8	314	251	162	42	M16X36	110	90	10	12	37	45	426	2-M40X1.5	608	15	498	256	152	300	250	350	18.5	5
160L	2,4,6,8	314	251	162	42	M16X36	110	90	10	12	37	45	426	2-M40X1.5	652	15	542	256	152	300	250	350	18.5	5
180M	2,4,8	355	267	162	48	M16X36	110	90	10	14	42.5	51.5	444.5	2-M40X1.5	688	15	578	271	152	300	250	350	18.5	5
180L	4,6,8	355	267	162	48	M16X36	110	90	10	14	42.5	51.5	444.5	2-M40X1.5	726	15	616	271	152	300	250	350	18.5	5
200L	2,4,6,8	397	299	210	55	M20X42	110	100	5	16	49	59	499	2-M50X1.5	771	17	661	296	190	350	300	400	18.5	5
225S	4,8	446	322	210	60	M20X42	140	125	7.5	18	53	64	547	2-M50X1.5	824	20	684	329	190	400	350	450	18.5	5
225M	2	446	322	210	55	M20X42	110	100	5	16	49	59	547	2-M50X1.5	819	20	709	299	190	400	350	450	18.5	5
225M	4,6,8	446	322	210	60	M20X42	140	125	7.5	18	53	64	547	2-M50X1.5	849	20	709	329	190	400	350	450	18.5	5
250M	2	485	358	248	60	M20X42	140	125	7.5	18	53	64	633	2-M63X1.5	910	22	770	347	218	500	450	550	18.5	5
250M	4,6,8	485	358	248	65	M20X42	140	125	7.5	18	58	69	633	2-M63X1.5	910	22	770	347	218	500	450	550	18.5	5
280S	2	547	387	248	65	M20X42	140	125	7.5	18	58	69	662	2-M63X1.5	982	22	842	355.5	218	500	450	550	18.5	5
280S	4,6,8	547	387	248	75	M20X42	140	125	7.5	20	67.5	79.5	662	2-M63X1.5	982	22	842	355.5	218	500	450	550	18.5	5
280M	2	547	387	248	65	M20X42	140	125	7.5	18	58	69	662	2-M63X1.5	1033	22	893	355.5	218	500	450	550	18.5	5
280M	4,6,8	547	387	248	75	M20X42	140	125	7.5	20	67.5	79.5	662	2-M63X1.5	1033	22	893	355.5	218	500	450	550	18.5	5
315S	2	620	527	320	65	M20X42	140	125	7.5	18	58	69	857	2-M63X1.5	1178	22	1038	397	280	600	550	660	24	6
315S	4,6,8,10	620	527	320	80	M20X42	170	160	5	22	71	85	857	2-M63X1.5	1208	22	1038	427	280	600	550	660	24	6
315M	2	620	527	320	65	M20X42	140	125	7.5	18	58	69	857	2-M63X1.5	1288	22	1148	397	280	600	550	660	24	6
315M	4,6,8,10	620	527	320	80	M20X42	170	160	5	22	71	85	857	2-M63X1.5	1318	22	1148	427	280	600	550	660	24	6
315L	2	620	527	320	65	M20X42	140	125	7.5	18	58	69	857	2-M63X1.5	1288	22	1148	397	280	600	550	660	24	6
315L	4,6,8,10	620	527	320	80	M20X42	170	160	5	22	71	85	857	2-M63X1.5	1318	22	1148	427	280	600	550	660	24	6
355M	2	698	642	380	75	M20X50	140	130	5	20	67.5	79.5	1042	2-M63X1.5	1486	25	1346	414	330	740	680	800	24	6
355M	4,6,8,10	698	642	380	95	M24X50	170	160	5	25	86	100	1042	2-M63X1.5	1516	25	1346	444	330	740	680	800	24	6
355L	2	698	642	380	75	M20X50	140	130	5	20	67.5	79.5	1042	2-M63X1.5	1486	25	1346	414	330	740	680	800	24	6
355L	4,6,8,10	698	642	380	95	M24X50	170	160	5	25	86	100	1042	2-M63X1.5	1516	25	1346	444	330	740	680	800	24	6

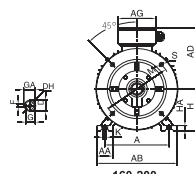
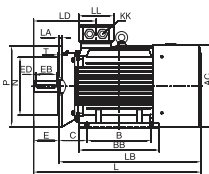
# YE2 MOTOR



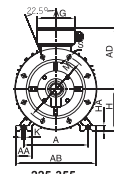
## YE2 MOUNTING AND OVERALL DIMENSIONS IM B35 H63-355



63-132



160-200



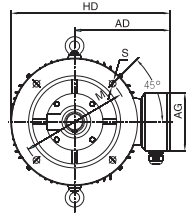
225-355

TYPE	POLE	A	AA	AB	AC	AD	AG	B	BB	C	D	DH	E	EB	ED	F	G	GA	H	HA	K	KK	L	LA	LB	LD	LL	M	N	P	S	T
63	2,4,6	100	30	130	120	113	94	80	110	40	11	M4X12	23	16	3.5	4	8.5	12.5	63	8	4-φ7	1-M20X1.5	217	10	194	80.5	94	115	95	140	10	3
71	2,4,6	112	32	144	136	119	94	90	120	45	14	M5X12	30	25	2.5	5	11	16	71	8	4-φ7	1-M20X1.5	242	10	212	99	94	130	110	160	10	3.5
80	2,4,6,8	125	34	160	155.4	131	94	100	130	50	19	M6X16	40	30	5	6	15.5	21.5	80	10	4-φ10	1-M25X1.5	284	12	244	112	94	165	130	200	12	3.5
90S	2,4,6,8	140	36	176	175.4	148	102	100	130	56	24	M8X19	50	40	5	8	20	27	90	12	4-φ10	1-M25X1.5	318	12	258	130	102	165	130	200	12	3.5
90L	2,4,6,8	140	36	176	175.4	148	102	125	155	56	24	M8X19	50	40	5	8	20	27	90	12	4-φ10	1-M25X1.5	343	12	283	130	102	165	130	200	12	3.5
100L	2,4,6,8	160	40	200	195.4	162	102	140	176	63	28	M10X22	60	50	5	8	24	31	100	14	4-φ12	1-M32X1.5	370	13	320	139	102	215	180	250	14.5	4
112M	2,4,6,8	190	45	226	219.4	183	118	140	180	70	28	M10X22	60	50	5	8	24	31	112	15	4-φ12	2-M32X1.5	394	14	334	147	110	215	180	250	14.5	4
132S	2,4,6,8	216	55	262	258.4	203	118	140	186	89	38	M12X28	80	65	7.5	10	33	41	132	18	4-φ12	2-M32X1.5	456	14	390	172	110	265	230	300	14.5	4
132M	4,6,8	216	55	262	258.4	203	118	178	224	89	38	M12X28	80	65	7.5	10	33	41	132	18	4-φ12	2-M32X1.5	494	14	428	172	110	265	230	300	14.5	4
160M	2,4,6,8	254	65	314	314	251	162	210	260	108	42	M16X36	110	90	10	12	37	45	160	20	4-φ14.5	2-M40X1.5	608	15	498	256	152	300	250	350	18.5	5
160L	2,4,6,8	254	65	314	314	251	162	254	304	108	42	M16X36	110	90	10	12	37	45	160	20	4-φ14.5	2-M40X1.5	652	15	542	256	152	300	250	350	18.5	5
180M	2,4,8	279	70	349	355	267	162	241	311	121	48	M16X36	110	90	10	14	42.5	51.5	180	22	4-φ14.5	2-M40X1.5	688	15	578	271	152	300	250	350	18.5	5
180L	4,6,8	279	70	349	355	267	162	279	349	121	48	M16X36	110	90	10	14	42.5	51.5	180	22	4-φ14.5	2-M40X1.5	726	15	616	271	152	300	250	350	18.5	5
200L	2,4,6,8	318	70	388	397	299	210	305	369	133	55	M20X42	110	100	5	16	49	59	200	25	4-φ18.5	2-M50X1.5	771	17	661	296	190	350	300	400	18.5	5
225S	4,8	356	75	431	446	322	210	286	368	149	60	M20X42	140	125	7.5	18	53	64	225	28	4-φ18.5	2-M50X1.5	824	20	684	329	190	400	350	450	18.5	5
225M	2	356	75	431	446	322	210	311	393	149	55	M20X42	110	100	5	16	49	59	225	28	4-φ18.5	2-M50X1.5	819	20	709	299	190	400	350	450	18.5	5
225M	4,6,8	356	75	431	446	322	210	311	393	149	60	M20X42	140	125	7.5	18	53	64	225	28	4-φ18.5	2-M50X1.5	849	20	709	329	190	400	350	450	18.5	5
250M	2	406	80	484	485	358	248	349	445	168	60	M20X42	140	125	7.5	18	53	64	250	30	4-φ24	2-M63X1.5	910	22	770	347	218	500	450	550	18.5	5
250M	4,6,8	406	80	484	485	358	248	349	445	168	65	M20X42	140	125	7.5	18	58	69	250	30	4-φ24	2-M63X1.5	910	22	770	347	218	500	450	550	18.5	5
280S	2	457	85	542	547	387	248	368	485	190	65	M20X42	140	125	7.5	18	58	69	280	35	4-φ24	2-M63X1.5	982	22	842	355.5	218	500	450	550	18.5	5
280S	4,6,8	457	85	542	547	387	248	368	485	190	75	M20X42	140	125	7.5	20	67.5	79.5	280	35	4-φ24	2-M63X1.5	982	22	842	355.5	218	500	450	550	18.5	5
280M	2	457	85	542	547	387	248	419	536	190	65	M20X42	140	125	7.5	18	58	69	280	35	4-φ24	2-M63X1.5	1033	22	893	355.5	218	500	450	550	18.5	5
280M	4,6,8	457	85	542	547	387	248	419	536	190	75	M20X42	140	125	7.5	20	67.5	79.5	280	35	4-φ24	2-M63X1.5	1033	22	893	355.5	218	500	450	550	18.5	5
315S	2	508	120	628	620	527	320	406	570	216	65	M20X42	140	125	7.5	18	58	69	315	45	4-φ28	2-M63X1.5	1178	22	1038	397	280	600	550	660	24	6
315S	4,6,8,10	508	120	628	620	527	320	406	570	216	80	M20X42	170	160	5	22	71	85	315	45	4-φ28	2-M63X1.5	1208	22	1038	427	280	600	550	660	24	6
315M	2	508	120	628	620	527	320	457	680	216	65	M20X42	140	125	7.5	18	58	69	315	45	4-φ28	2-M63X1.5	1288	22	1148	397	280	600	550	660	24	6
315M	4,6,8,10	508	120	628	620	527	320	457	680	216	80	M20X42	170	160	5	22	71	85	315	45	4-φ28	2-M63X1.5	1318	22	1148	427	280	600	550	660	24	6
315L	2	508	120	628	620	527	320	508	680	216	65	M20X42	140	125	7.5	18	58	69	315	45	4-φ28	2-M63X1.5	1288	22	1148	397	280	600	550	660	24	6
315L	4,6,8,10	508	120	628	620	527	320	508	680	216	80	M20X42	170	160	5	22	71	85	315	45	4-φ28	2-M63X1.5	1318	22	1148	427	280	600	550	660	24	6
355M	2	610	116	726	698	642	380	560	750	254	75	M20X50	140	130	5	20	67.5	79.5	355	52	6-φ28	2-M63X1.5	1486	25	1346	414	330	740	680	800	24	6
355M	4,6,8,10	610	116	726	698	642	380	560	750	254	95	M24X50	170	160	5	25	86	100	355	52	6-φ28	2-M63X1.5	1516	25	1346	444	330	740	680	800	24	6
355L	2	610	116	726	698	642	380	630	750	254	75	M20X50	140	130	5	20	67.5	79.5	355	52	6-φ28	2-M63X1.5	1486	25	1346	414	330	740	680	800	24	6
355L	4,6,8,10	610	116	726	698	642	380	630	750	254	95	M24X50	170	160	5	25	86	100	355	52	6-φ28	2-M63X1.5	1516	25	1346	444	330	740	680	800	24	6

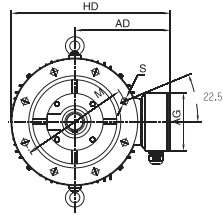
# YE2 MOTOR



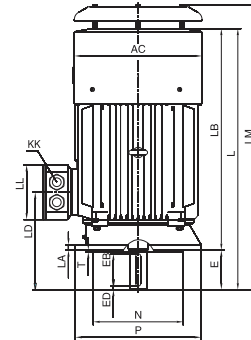
## YE2 MOUNTING AND OVERALL DIMENSIONS IM V1 H160-355



160-200



225-355



TYPE	POLE	AC	AD	AG	D	DH	E	EB	ED	F	G	GA	HD	KK	L	LA	LB	LD	LL	LM	M	N	P	S	T
160M	2,4,6,8	314	251	162	42	M16X36	110	90	10	12	37	45	426	2-M40X1.5	608	15	498	256	152	670	300	250	350	18.5	5
160L	2,4,6,8	314	251	162	42	M16X36	110	90	10	12	37	45	426	2-M40X1.5	652	15	542	256	152	714	300	250	350	18.5	5
180M	2,4,8	355	267	162	48	M16X36	110	90	10	14	42.5	51.5	444.5	2-M40X1.5	688	15	578	271	152	760	300	250	350	18.5	5
180L	4,6,8	355	267	162	48	M16X36	110	90	10	14	42.5	51.5	444.5	2-M40X1.5	726	15	616	271	152	798	300	250	350	18.5	5
200L	2,4,6,8	397	299	210	55	M20X42	110	100	5	16	49	59	499	2-M50X1.5	771	17	661	296	190	845	350	300	400	18.5	5
225S	4,8	446	322	210	60	M20X42	140	125	7.5	18	53	64	547	2-M50X1.5	824	20	684	329	190	898	400	350	450	18.5	5
225M	2	446	322	210	55	M20X42	110	100	5	16	49	59	547	2-M50X1.5	819	20	709	299	190	893	400	350	450	18.5	5
225M	4,6,8	446	322	210	60	M20X42	140	125	7.5	18	53	64	547	2-M50X1.5	849	20	709	329	190	893	400	350	450	18.5	5
250M	2	485	358	248	60	M20X42	140	125	7.5	18	53	64	633	2-M63X1.5	910	22	770	347	218	986	500	450	550	18.5	5
250M	4,6,8	485	358	248	65	M20X42	140	125	7.5	18	58	69	633	2-M63X1.5	910	22	770	347	218	986	500	450	550	18.5	5
280S	2	547	387	248	65	M20X42	140	125	7.5	18	58	69	662	2-M63X1.5	982	22	842	355.5	218	1058	500	450	550	18.5	5
280S	4,6,8	547	387	248	75	M20X42	140	125	7.5	20	67.5	79.5	662	2-M63X1.5	982	22	842	355.5	218	1058	500	450	550	18.5	5
280M	2	547	387	248	65	M20X42	140	125	7.5	18	58	69	662	2-M63X1.5	1033	22	893	355.5	218	1109	500	450	550	18.5	5
280M	4,6,8	547	387	248	75	M20X42	140	125	7.5	20	67.5	79.5	662	2-M63X1.5	1033	22	893	355.5	218	1109	500	450	550	18.5	5
315S	2	620	527	284	65	M20X42	140	125	7.5	18	58	69	857	2-M63X1.5	1178	22	1038	397	280	1259	600	550	660	24	6
315S	4,6,8,10	620	527	284	80	M20X42	170	160	5	22	71	85	857	2-M63X1.5	1208	22	1038	427	280	1289	600	550	660	24	6
315M	2	620	527	284	65	M20X42	140	125	7.5	18	58	69	857	2-M63X1.5	1288	22	1148	397	280	1369	600	550	660	24	6
315M	4,6,8,10	620	527	284	80	M20X42	170	160	5	22	71	85	857	2-M63X1.5	1318	22	1148	427	280	1399	600	550	660	24	6
315L	2	620	527	284	65	M20X42	140	125	7.5	18	58	69	857	2-M63X1.5	1288	22	1148	397	280	1369	600	550	660	24	6
315L	4,6,8,10	620	527	284	80	M20X42	170	160	5	22	71	85	857	2-M63X1.5	1318	22	1148	427	280	1399	600	550	660	24	6
355M	2	698	642	380	75	M20X50	140	130	5	20	67.5	79.5	1042	2-M63X1.5	1486	25	1346	414	330	1567	740	680	800	24	6
355M	4,6,8,10	698	642	380	95	M24X50	170	160	5	25	86	100	1042	2-M63X1.5	1516	25	1346	444	330	1597	740	680	800	24	6
355L	2	698	642	380	75	M20X50	140	130	5	20	67.5	79.5	1042	2-M63X1.5	1486	25	1346	414	330	1567	740	680	800	24	6
355L	4,6,8,10	698	642	380	95	M24X50	170	160	5	25	86	100	1042	2-M63X1.5	1516	25	1346	444	330	1597	740	680	800	24	6

**THOMPSON**

**Electric Industries** INC



**[www.thompstonelectricindustries.com](http://www.thompstonelectricindustries.com)**

**MANUFACTURING FOR WORLD PRESENCE**

[info@thompstonelectricindustries.com](mailto:info@thompstonelectricindustries.com)

Blair Rd, Houston, Texas, USA