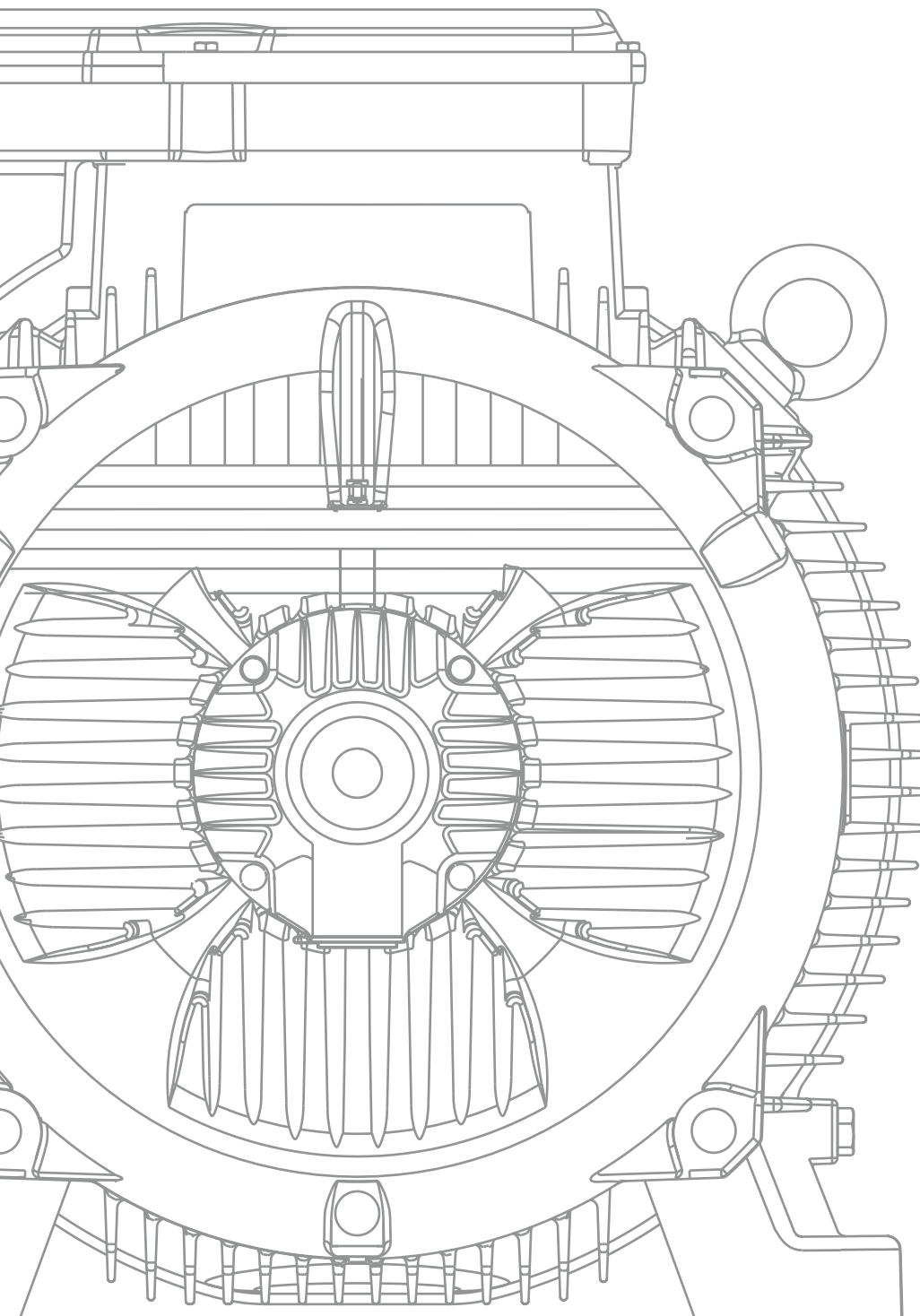




CATALOGUE

# **IE3 - YE3 MOTORS 60HZ**





# CONTENTS

## TECHNICAL DATA

SPEED 3600RPM 2-POLE 60HZ .....	3
SPEED 1800RPM 4-POLE 60HZ .....	4
SPEED 1200RPM 6-POLE 60HZ .....	5
SPEED 900RPM 8-POLE 60HZ .....	6

## MOUNTING AND OVERALL DIMENSIONS

IM B3 H63 - 355 .....	7
IM B5 H63 - 355.....	8
IM B35 H63 - 355 .....	9
IM V1 H160 - 355 .....	10

# YE3 MOTOR



## YE3 TECHNICAL DATA

### SPEED 3600RPM 2-POLE 60HZ

Type	Rated power		Rated Speed (r/min)	Efficiency $\eta$ % (IE3) load at			Power factor ( $\cos\phi$ )	Rated current at 60Hz			Rated Torque Nm	Is/In (times)	Ts/Tn (times)	Tmax/Tn (times)	Weight kg
	kW	HP		100%	75%	50%		220V (A)	380V (A)	440V (A)					
YE3-631-2	0.18	0.25	3600	65.9	65.9	64.6	0.8	0.90	0.52	0.45	0.6	5.5	2.2	2.2	9.5
YE3-632-2	0.25	0.37	3600	69.7	69.7	68.3	0.81	1.16	0.67	0.58	0.9	5.5	2.2	2.2	10
YE3-711-2	0.37	0.5	3600	73.8	73.8	72.3	0.81	1.62	0.94	0.81	1.3	6.1	2.2	2.2	11
YE3-712-2	0.55	0.75	3600	77.8	77.8	76.2	0.82	2.26	1.31	1.13	1.9	6.1	2.3	2.3	12.1
YE3-801-2	0.75	1	3600	80.7	80.7	79.1	0.82	2.97	1.72	1.49	2.5	7.0	2.3	2.3	18.1
YE3-802-2	1.1	1.5	3600	82.7	82.7	81	0.83	4.21	2.43	2.10	3.6	7.3	2.3	2.2	19.5
YE3-90S-2	1.5	2	3600	84.2	84.2	82.5	0.84	5.57	3.22	2.78	4.9	7.6	2.3	2.2	23.3
YE3-90L-2	2.2	3	3600	85.9	85.9	84.2	0.85	7.91	4.58	3.95	7.3	7.6	2.3	2.2	27.1
YE3-100L-2	3	4	3600	87.1	87.1	85.4	0.87	10.4	6.02	5.19	9.9	7.8	2.3	2.2	38.8
YE3-112M-2	4	5.5	3600	88.1	88.1	86.3	0.88	13.5	7.84	6.77	13	8.3	2.3	2.2	48.3
YE3-132S1-2	5.5	7.5	3600	89.2	89.2	87.4	0.88	18.4	10.6	9.19	18	8.3	2.3	2.0	55.1
YE3-132S2-2	7.5	10	3600	90.1	90.1	88.3	0.88	24.8	14.4	12.4	24	7.9	2.3	2.0	69.2
YE3-160M1-2	11	15	3600	91.2	91.2	89.4	0.89	35.6	20.6	17.8	36	8.1	2.3	2.0	113
YE3-160M2-2	15	20	3600	91.9	91.9	90.1	0.89	48.1	27.9	24.1	49	8.1	2.3	2.0	123
YE3-160L-2	18.5	25	3600	92.4	92.4	90.6	0.89	59.0	34.2	29.5	60	8.2	2.3	2.0	142
YE3-180M-2	22	30	3600	92.7	92.7	90.8	0.89	70.0	40.5	35.0	71	8.2	2.3	2.0	182
YE3-200L1-2	30	40	3600	93.3	93.3	91.4	0.89	94.8	54.9	47.4	97	7.6	2.3	2.0	246
YE3-200L2-2	37	50	3600	93.7	93.7	91.8	0.89	116	67.4	58.2	119	7.6	2.3	2.0	265
YE3-225M-2	45	60	3600	94.0	94	92.1	0.9	140	80.8	69.8	145	7.7	2.3	2.0	323
YE3-250M-2	55	75	3600	94.3	94.3	92.4	0.9	170	98.5	85.0	177	7.7	2.3	2.0	413
YE3-280S-2	75	100	3600	94.7	94.7	92.8	0.9	231	134	115	241	7.1	2.3	1.8	546
YE3-280M-2	90	125	3600	95.0	95	93.1	0.9	276	160	138	289	7.1	2.3	1.8	569
YE3-315S-2	110	150	3600	95.2	95.2	93.3	0.9	337	195	168	353	7.1	2.3	1.8	897
YE3-315M-2	132	180	3600	95.4	95.4	93.5	0.9	403	234	202	423	7.1	2.3	1.8	1029
YE3-315L1-2	160	200	3600	95.6	95.6	93.7	0.91	483	279	241	513	7.2	2.3	1.8	1067
YE3-315L3-2	200	270	3600	95.8	95.8	93.9	0.91	602	349	301	641	7.2	2.2	1.8	1194
YE3-355M1-2	220	300	3600	95.8	95.8	93.9	0.91	662	383	331	705	7.2	2.2	1.6	1635
YE3-355M2-2	250	340	3600	95.8	95.8	93.9	0.91	753	436	376	801	7.2	2.2	1.6	1685
YE3-355L1-2	280	375	3600	95.8	95.8	93.9	0.91	843	488	421	897	7.2	2.2	1.6	1750
YE3-355L2-2	315	430	3600	95.8	95.8	93.9	0.91	948	549	474	1009	7.2	2.2	1.6	1800

# YE3 MOTOR



## YE3 TECHNICAL DATA

### SPEED 1800RPM 4-POLE 60HZ

Type	Rated power		Rated Speed (r/min)	Efficiency $\eta$ % (IE3) load at			Power factor ( $\cos\phi$ )	Rated current at 60Hz			Rated Torque Nm	Is/In (times)	Ts/Tn (times)	Tmax/Tn (times)	Weight kg
	kW	HP		100%	75%	50%		220V (A)	380V (A)	440V (A)					
YE3-631-4	0.12	0.18	1800	64.8	64.8	63.5	0.72	0.67	0.39	0.34	0.9	4.4	2.2	2.1	9.8
YE3-632-4	0.18	0.25	1800	69.9	69.9	68.5	0.73	0.93	0.54	0.46	1.3	4.4	2.2	2.1	10.5
YE3-711-4	0.25	0.37	1800	73.5	73.5	72	0.74	1.21	0.70	0.60	1.8	5.2	2.2	2.1	15.2
YE3-712-4	0.37	0.5	1800	77.3	77.3	75.8	0.75	1.67	0.97	0.84	2.6	5.2	2.2	2.1	16.6
YE3-801-4	0.55	0.75	1800	80.8	80.8	79.2	0.75	2.38	1.38	1.19	3.8	5.2	2.3	2.4	17.6
YE3-802-4	0.75	1	1800	82.5	82.5	80.9	0.75	3.18	1.84	1.59	5.0	6.6	2.3	2.3	18.4
YE3-90S-4	1.1	1.5	1800	84.1	84.1	82.4	0.76	4.52	2.61	2.26	7.3	6.8	2.3	2.3	24.2
YE3-90L-4	1.5	2	1800	85.3	85.3	83.6	0.77	5.99	3.47	3.00	9.9	7	2.3	2.3	29.7
YE3-100L1-4	2.2	3	1800	86.7	86.7	85	0.81	8.22	4.76	4.11	14	7.6	2.3	2.3	41.5
YE3-100L2-4	3	4	1800	87.7	87.7	85.9	0.82	10.9	6.34	5.47	20	7.6	2.3	2.3	46
YE3-112M-4	4	5.5	1800	88.6	88.6	86.8	0.82	14.4	8.37	7.22	26	7.8	2.3	2.2	63.2
YE3-132S-4	5.5	7.5	1800	89.6	89.6	87.8	0.83	19.4	11.2	9.70	36	7.9	2.3	2	71.2
YE3-132M-4	7.5	10	1800	90.4	90.4	88.6	0.84	25.9	15.0	13.0	49	7.5	2.3	2	85.1
YE3-160M-4	11	15	1800	91.4	91.4	89.6	0.85	37.2	21.5	18.6	72	7.7	2.3	2.2	121
YE3-160L-4	15	20	1800	92.1	92.1	90.3	0.86	49.7	28.8	24.9	98	7.8	2.3	2.2	142
YE3-180M-4	18.5	25	1800	92.6	92.6	90.7	0.86	61.0	35.3	30.5	120	7.8	2.3	2	181
YE3-180L-4	22	30	1800	93.0	93	91.1	0.86	72.2	41.8	36.1	143	7.8	2.3	2	209
YE3-200L-4	30	40	1800	93.6	93.6	91.7	0.86	97.8	56.6	48.9	194	7.3	2.3	2	284
YE3-225S-4	37	50	1800	93.9	93.9	92	0.86	120	69.6	60.1	238	7.4	2.3	2	328
YE3-225M-4	45	60	1800	94.2	94.2	92.3	0.86	146	84.4	72.9	289	7.4	2.3	2	363
YE3-250M-4	55	75	1800	94.6	94.6	92.7	0.86	177	103	88.7	354	7.4	2.3	2.2	442
YE3-280S-4	75	100	1800	95.0	95	93.1	0.88	235	136	118	482	6.9	2.3	2	569
YE3-280M-4	90	125	1800	95.2	95.2	93.3	0.88	282	163	141	578	6.9	2.3	2	639
YE3-315S-4	110	150	1800	95.4	95.4	93.5	0.89	340	197	170	706	7	2.2	2	939
YE3-315M-4	132	180	1800	95.6	95.6	93.7	0.89	407	236	204	847	7	2.2	2	1033
YE3-315L1-4	160	200	1800	95.8	95.8	93.9	0.89	492	285	246	1027	7.1	2.2	2	1126
YE3-315L2-4	200	270	1800	96.0	96	94.1	0.9	607	352	304	1282	7.1	2.2	2	1238
YE3-355M1-4	220	300	1800	96.0	96	94.1	0.9	668	387	334	1410	7.1	2.2	2	1750
YE3-355M2-4	250	340	1800	96.0	96	94.1	0.9	759	440	380	1602	7.1	2.2	2	1830
YE3-355L1-4	280	375	1800	96.0	96	94.1	0.9	850	492	425	1795	7.1	2.2	2	1880
YE3-355L2-4	315	430	1800	96.0	96	94.1	0.9	957	554	478	2019	7.1	2.2	2	1950

## YE3 MOTOR



## YE3 TECHNICAL DATA

SPEED 1200RPM 6-POLE 60HZ

Type	Rated power		Rated Speed (r/min)	Efficiency $\eta\%$ (IE3) load at			Power factor ( $\cos\phi$ )	Rated current at 60Hz			Rated Torque Nm	Is/In (times)	Ts/Tn (times)	Tmax/Tn (times)	Weight kg
	kW	HP		100%	75%	50%		220V (A)	380V (A)	440V (A)					
YE3-711-6	0.18	0.25	1200	63.9	63.9	62.6	0.66	1.12	0.65	0.56	2.0	4.0	2.0	1.9	11
YE3-712-6	0.25	0.37	1200	68.6	68.6	67.2	0.68	1.41	0.81	0.70	2.8	4.0	2.0	1.9	11.5
YE3-801-6	0.37	0.5	1200	73.5	73.5	72	0.7	1.89	1.09	0.94	4.0	4.7	2.0	1.9	15.2
YE3-802-6	0.55	0.75	1200	77.2	77.2	75.7	0.72	2.60	1.50	1.30	5.9	4.7	2.1	1.9	16.6
YE3-90S-6	0.75	1	1200	78.9	78.9	77.3	0.71	3.51	2.03	1.76	7.7	6.0	2.1	2.0	24.1
YE3-90L-6	1.1	1.5	1200	81.0	81	79.4	0.73	4.88	2.83	2.44	11	6.0	2.1	2.0	25.7
YE3-100L-6	1.5	2	1200	82.5	82.5	80.9	0.73	6.54	3.78	3.27	15	6.5	2.1	2.0	34.9
YE3-112M-6	2.2	3	1200	84.3	84.3	82.6	0.74	9.26	5.36	4.63	22	6.6	2.1	2.0	54.2
YE3-132S-6	3	4	1200	85.6	85.6	83.9	0.74	12.4	7.20	6.21	30	6.8	2.1	2.0	62.3
YE3-132M1-6	4	5.5	1200	86.8	86.8	85.1	0.74	16.3	9.46	8.17	39	6.8	2.1	2.0	75.2
YE3-132M2-6	5.5	7.5	1200	88.0	88	86.2	0.75	21.9	12.7	10.9	54	7.0	2.1	2.0	82.3
YE3-160M-6	7.5	10	1200	89.1	89.1	87.3	0.79	28.0	16.2	14.0	74	7.0	2.1	2.0	112
YE3-160L-6	11	15	1200	90.3	90.3	88.5	0.8	40.0	23.1	20.0	108	7.2	2.1	2.0	134
YE3-180L-6	15	20	1200	91.2	91.2	89.4	0.81	53.3	30.9	26.6	146	7.3	2.1	2.0	197
YE3-200L1-6	18.5	25	1200	91.7	91.7	89.9	0.81	65.4	37.8	32.7	180	7.3	2.1	2.0	234
YE3-200L2-6	22	30	1200	92.2	92.2	90.4	0.81	77.3	44.8	38.7	214	7.4	2.1	2.0	251
YE3-225M-6	30	40	1200	92.9	92.9	91	0.83	102	59.1	51.1	292	6.9	2.1	2.0	308
YE3-250M-6	37	50	1200	93.3	93.3	91.4	0.84	124	71.7	61.9	359	7.1	2.1	2.0	383
YE3-280S-6	45	60	1200	93.7	93.7	91.8	0.85	148	85.8	74.1	436	7.3	2.0	2.0	501
YE3-280M-6	55	75	1200	94.1	94.1	92.2	0.86	178	103	89.2	533	7.3	2.0	2.0	573
YE3-315S-6	75	100	1200	94.6	94.6	92.7	0.84	248	143	124	727	6.6	2.0	2.0	843
YE3-315M-6	90	125	1200	94.9	94.9	93	0.85	293	170	146	870	6.7	2.0	2.0	941
YE3-315L1-6	110	150	1200	95.1	95.1	93.2	0.85	357	207	179	1063	6.7	2.0	2.0	1017
YE3-315L2-6	132	180	1200	95.4	95.4	93.5	0.86	422	244	211	1276	6.8	2.0	2.0	1121
YE3-355M1-6	160	200	1200	95.6	95.6	93.7	0.86	511	296	255	1543	6.8	2.0	1.8	1715
YE3-355M2-6	185	250	1200	95.8	95.8	93.9	0.87	583	337	291	1785	6.8	2.0	1.8	1800
YE3-355M3-6	200	270	1200	95.8	95.8	93.9	0.87	630	365	315	1929	6.8	2.0	1.8	1846
YE3-355L1-6	220	300	1200	95.8	95.8	93.9	0.87	693	401	346	2122	6.8	2.0	1.8	2000
YE3-355L2-6	250	340	1200	95.8	95.8	93.9	0.87	787	456	394	2412	6.8	2.0	1.8	2085

# YE3 MOTOR



## YE3 TECHNICAL DATA

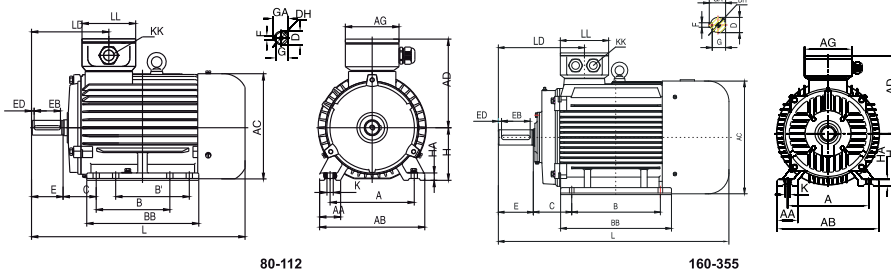
### SPEED 900RPM 8-POLE 60HZ

Type	Rated power		Rated Speed (r/min)	Efficiency $\eta$ % (IE3) load at			Power factor (cos $\phi$ )	Rated current at 60Hz			Rated Torque Nm	Is/In (times)	Ts/Tn (times)	Tmax/Tn (times)	Weight kg
	kW	HP		100%	75%	50%		220V (A)	380V (A)	440V (A)					
YE3-801-8	0.18	0.25	900	58.7	58.7	57.5	0.61	1.32	0.76	0.66	2.6	3.3	1.9	1.8	14.5
YE3-802-8	0.25	0.37	900	64.1	64.1	62.8	0.61	1.68	0.97	0.84	3.7	3.3	1.9	1.8	16.7
YE3-90S-8	0.37	0.5	900	69.3	69.3	67.9	0.61	2.30	1.33	1.15	5.2	4.0	1.9	1.8	28.2
YE3-90L-8	0.55	0.75	900	73.0	73	71.5	0.61	3.24	1.88	1.62	7.8	4.0	2.0	1.8	29.7
YE3-100L1-8	0.75	1	900	75.0	75	73.5	0.67	3.92	2.27	1.96	10	4.0	2.0	1.8	40
YE3-100L2-8	1.1	1.5	900	77.7	77.7	76.1	0.69	5.38	3.12	2.69	15	5.0	2.0	1.8	41.4
YE3-112M-8	1.5	2	900	79.7	79.7	78.1	0.7	7.06	4.09	3.53	21	5.0	2.0	1.8	57.5
YE3-132S-8	2.2	3	900	81.9	81.9	80.3	0.71	9.93	5.75	4.96	30	6.0	2.0	1.8	74.8
YE3-132M-8	3	4	900	83.5	83.5	81.8	0.73	12.9	7.48	6.46	40	6.0	2.0	1.8	89.1
YE3-160M1-8	4	5.5	900	84.8	84.8	83.1	0.73	17.0	9.82	8.48	53	6.0	2.0	1.9	101
YE3-160M2-8	5.5	7.5	900	86.2	86.2	84.5	0.74	22.6	13.1	11.3	72	6.0	2.0	1.9	126.5
YE3-160L-8	7.5	10	900	87.3	87.3	85.6	0.75	30.1	17.4	15.0	99	6.0	2.0	1.9	136
YE3-180L-8	11	15	900	88.6	88.6	86.8	0.75	43.4	25.2	21.7	143	6.5	2.0	2.0	198
YE3-200L-8	15	20	900	89.6	89.6	87.8	0.76	57.8	33.5	28.9	196	6.6	2.0	2.0	234
YE3-225S-8	18.5	25	900	90.1	90.1	88.3	0.76	70.9	41.0	35.5	242	6.6	2.0	1.9	284
YE3-225M-8	22	30	900	90.6	90.6	88.8	0.78	81.7	47.3	40.9	288	6.6	2.0	1.9	325
YE3-250M-8	30	40	900	91.3	91.3	89.5	0.79	109	63.2	54.6	390	6.5	2.0	1.9	425
YE3-280S-8	37	50	900	91.8	91.8	90	0.79	134	77.5	66.9	481	6.6	2.0	1.9	518
YE3-280M-8	45	60	900	92.2	92.2	90.4	0.79	162	93.9	81.1	585	6.6	2.0	1.9	582
YE3-315S-8	55	75	900	92.5	92.5	90.7	0.81	193	112	96.3	715	6.6	2.0	1.8	852
YE3-315M-8	75	100	900	93.1	93.1	91.2	0.81	261	151	131	974	6.2	2.0	1.8	952
YE3-315L1-8	90	125	900	93.4	93.4	91.5	0.82	308	179	154	1169	6.4	2.0	1.8	1040
YE3-315L2-8	110	150	900	93.7	93.7	91.8	0.82	376	218	188	1429	6.4	2.0	1.8	1056
YE3-355M1-8	132	180	900	94.0	94	92.1	0.82	449	260	225	1704	6.4	2.0	1.8	1784
YE3-355M2-8	160	220	900	94.3	94.3	92.4	0.82	543	314	272	2065	6.4	2.0	1.8	1941
YE3-355L1-8	185	250	900	94.5	94.5	92.5	0.83	619	358	310	2388	6.4	2.0	1.8	1980
YE3-355L2-8	200	270	900	94.6	94.6	92.7	0.83	668	387	334	2581	6.4	2.0	1.8	2026

# YE3 MOTOR



## YE3 MOUNTING AND OVERALL DIMENSIONS IM B3 H63-355



80-112

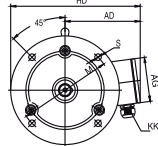
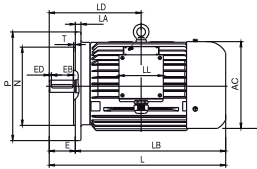
160-355

TYPE	POLE	A	AA	AB	AC	AD	AG	B	BB	C	D	DH	E	EB	ED	F	G	GA	H	HA	K	KK	L	LD	LL
63	2,4,6	100	30	130	120	113	94	80	110	40	11	M4X12	23	16	3.5	4	8.5	12.5	63	8	4-Ø7	1-M20X1.5	217	80.5	94
71	2,4,6	112	32	144	136	119	94	90	120	45	14	M5X12	30	25	2.5	5	11	16	71	8	4-Ø7	1-M20X1.5	242	99	94
80	2,4,6,8	125	34	160	167	147	102	100	150	50	19	M6X16	40	30	5	6	15.5	21.5	80	10	4-Ø10	1-M25X1.5	304	119	102
90S	2,4,6,8	140	36	176	182.4	154.5	102	100	161	56	24	M8X19	50	40	5	8	20	27	90	12	4-Ø10	1-M25X1.5	336	143	102
90L	2,4,6,8	140	36	176	182.4	154.5	102	125	186	56	24	M8X19	50	40	5	8	20	27	90	12	4-Ø10	1-M25X1.5	361	143	102
100L	2,4,6,8	160	40	200	205.4	166	102	140	213	63	28	M10X22	60	50	5	8	24	31	100	14	4-Ø12	1-M32X1.5	406	147	102
112M	2,4,6,8	190	50	240	230	188	118	140	188	70	28	M10X22	60	50	5	8	24	31	112	15	4-Ø12	2-M32X1.5	394	147	110
132S	2,4,6,8	216	55	262	258.4	203	118	140	186	89	38	M12X28	80	65	7.5	10	33	41	132	18	4-Ø12	2-M32X1.5	438	172	110
132M	4,6,8	216	55	262	258.4	203	118	178	224	89	38	M12X28	80	65	7.5	10	33	41	132	18	4-Ø12	2-M32X1.5	476	172	110
160M	2,4,6,8	254	65	314	314	251	162	210	260	108	42	M16X36	110	90	10	12	37	45	160	20	4-Ø14.5	2-M40X1.5	608	256	152
160L	2,4,6,8	254	65	314	314	251	162	254	304	108	42	M16X36	110	90	10	12	37	45	160	20	4-Ø14.5	2-M40X1.5	652	256	152
180M	2,4,8	279	70	349	355	267	162	241	311	121	48	M16X36	110	90	10	14	42.5	51.5	180	22	4-Ø14.5	2-M40X1.5	688	271	152
180L	4,6,8	279	70	349	355	267	162	279	349	121	48	M16X36	110	90	10	14	42.5	51.5	180	22	4-Ø14.5	2-M40X1.5	726	271	152
200L	2,4,6,8	318	70	388	397	299	210	305	369	133	55	M20X42	110	100	5	16	49	59	200	25	4-Ø18.5	2-M50X1.5	779	296	190
225S	4,8	356	75	431	446	322	210	286	368	149	60	M20X42	140	125	7.5	18	53	64	225	28	4-Ø18.5	2-M50X1.5	824	329	190
225M	2	356	75	431	446	322	210	311	393	149	55	M20X42	110	100	5	16	49	59	225	28	4-Ø18.5	2-M50X1.5	819	299	190
225M	4,6,8	356	75	431	446	322	210	311	393	149	60	M20X42	140	125	7.5	18	53	64	225	28	4-Ø18.5	2-M50X1.5	849	329	190
250M	2	406	80	484	485	358	248	349	445	168	60	M20X42	140	125	7.5	18	53	64	250	30	4-Ø24	2-M63X1.5	910	347	218
250M	4,6,8	406	80	484	485	358	248	349	445	168	65	M20X42	140	125	7.5	18	58	69	250	30	4-Ø24	2-M63X1.5	910	347	218
280S	2	457	85	542	547	387	248	368	485	190	65	M20X42	140	125	7.5	18	58	69	280	35	4-Ø24	2-M63X1.5	982	355.5	218
280S	4,6,8	457	85	542	547	387	248	368	485	190	75	M20X42	140	125	7.5	20	67.5	79.5	280	35	4-Ø24	2-M63X1.5	982	355.5	218
280M	2	457	85	542	547	387	248	419	536	190	65	M20X42	140	125	7.5	18	58	69	280	35	4-Ø24	2-M63X1.5	1033	355.5	218
280M	4,6,8	457	85	542	547	387	248	419	536	190	75	M20X42	140	125	7.5	20	67.5	79.5	280	35	4-Ø24	2-M63X1.5	1033	355.5	218
315S	2	508	120	628	620	527	320	406	570	216	65	M20X42	140	125	7.5	18	58	69	315	45	4-Ø28	2-M63X1.5	1194	397	280
315S	4,6,8,10	508	120	628	620	527	320	406	570	216	80	M20X42	170	160	5	22	71	85	315	45	4-Ø28	2-M63X1.5	1224	427	280
315M	2	508	120	628	620	527	320	457	680	216	65	M20X42	140	125	7.5	18	58	69	315	45	4-Ø28	2-M63X1.5	1304	397	280
315M	4,6,8,10	508	120	628	620	527	320	457	680	216	80	M20X42	170	160	5	22	71	85	315	45	4-Ø28	2-M63X1.5	1334	427	280
315L	2	508	120	628	620	527	320	508	680	216	65	M20X42	140	125	7.5	18	58	69	315	45	4-Ø28	2-M63X1.5	1304	397	280
315L	4,6,8,10	508	120	628	620	527	320	508	680	216	80	M20X42	170	160	5	22	71	85	315	45	4-Ø28	2-M63X1.5	1334	427	280
355M	2	610	116	726	698	642	380	560	750	254	75	M20X50	140	130	5	20	67.5	79.5	355	52	6-Ø28	2-M63X1.5	1486	414	330
355M	4,6,8,10	610	116	726	698	642	380	560	750	254	95	M24X50	170	160	5	25	86	100	355	52	6-Ø28	2-M63X1.5	1516	444	330
355L	2	610	116	726	698	642	380	630	750	254	75	M20X50	140	130	5	20	67.5	79.5	355	52	6-Ø28	2-M63X1.5	1486	414	330
355L	4,6,8,10	610	116	726	698	642	380	630	750	254	95	M24X50	170	160	5	25	86	100	355	52	6-Ø28	2-M63X1.5	1516	444	330

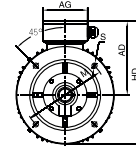
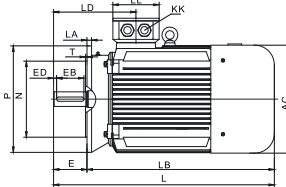
**YE3 MOTOR**



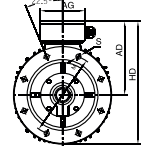
**YE3 MOUNTING AND OVERALL DIMENSIONS  
IM B5 H63-355**



80-112



160-200



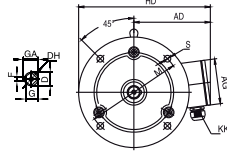
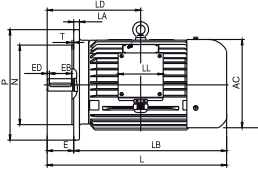
225-355

TYPE	POLE	AC	AD	AG	D	DH	E	EB	ED	F	G	GA	HD	KK	L	LA	LB	LD	LL	M	N	P	S	T
63	2,4,6	120	113	94	11	M4X12	23	16	3.5	4	8.5	12.5	183	1-M20X1.5	217	10	194	80.5	94	115	95	140	10	3
71	2,4,6	136	119	94	14	M5X12	30	25	2.5	5	11	16	199	1-M20X1.5	242	10	212	99	94	130	110	160	10	3.5
80	2, 4, 6, 8	167	154.5	102	19	M6X16	40	30	5	6	15.5	21.5	254.5	1-M25X1.5	304	12	264	112	102	165	130	200	12	3.5
90S	2, 4, 6, 8	182.4	162	102	24	M8X19	50	40	5	8	20	27	262	1-M25X1.5	336	12	286	130	102	165	130	200	12	3.5
90L	2, 4, 6, 8	182.4	162	102	24	M8X19	50	40	5	8	20	27	262	1-M25X1.5	361	12	311	130	102	165	130	200	12	3.5
100L	2, 4, 6, 8	205.4	173.5	102	28	M10X22	60	50	5	8	24	31	298.5	1-M32X1.5	406	13	346	139	102	215	180	250	14.5	4
112M	2, 4, 6, 8	230	188	118	28	M10X22	60	50	5	8	24	31	315	2-M32X1.5	394	14	334	205	110	215	180	250	14.5	4
132S	2, 4, 6, 8	258.4	203	118	38	M12X28	80	65	7.5	10	33	41	353	2-M32X1.5	438	14	390	172	110	265	230	300	14.5	4
132M	4, 6, 8	258.4	203	118	38	M12X28	80	65	7.5	10	33	41	353	2-M32X1.5	476	14	428	172	110	265	230	300	14.5	4
160M	2, 4, 6, 8	314	251	162	42	M16X36	110	90	10	12	37	45	426	2-M40X1.5	608	15	498	256	152	300	250	350	18.5	5
160L	2, 4, 6, 8	314	251	162	42	M16X36	110	90	10	12	37	45	426	2-M40X1.5	652	15	542	256	152	300	250	350	18.5	5
180M	2, 4, 8	355	267	162	48	M16X36	110	90	10	14	42.5	51.5	444.5	2-M40X1.5	688	15	578	271	152	300	250	350	18.5	5
180L	4, 6, 8	355	267	162	48	M16X36	110	90	10	14	42.5	51.5	444.5	2-M40X1.5	726	15	616	271	152	300	250	350	18.5	5
200L	2, 4, 6, 8	397	299	210	55	M20X42	110	100	5	16	49	59	499	2-M50X1.5	779	17	669	296	190	350	300	400	18.5	5
225S	4, 8	446	322	210	60	M20X42	140	125	7.5	18	53	64	547	2-M50X1.5	824	20	684	329	190	400	350	450	18.5	5
225M	2	446	322	210	55	M20X42	110	100	5	16	49	59	547	2-M50X1.5	819	20	709	299	190	400	350	450	18.5	5
225M	4, 6, 8	446	322	210	60	M20X42	140	125	7.5	18	53	64	547	2-M50X1.5	849	20	709	329	190	400	350	450	18.5	5
250M	2	485	358	248	60	M20X42	140	125	7.5	18	53	64	633	2-M63X1.5	910	22	770	347	218	500	450	550	18.5	5
250M	4, 6, 8	485	358	248	65	M20X42	140	125	7.5	18	58	69	633	2-M63X1.5	910	22	770	347	218	500	450	550	18.5	5
280S	2	547	387	248	65	M20X42	140	125	7.5	18	58	69	662	2-M63X1.5	982	22	842	355.5	218	500	450	550	18.5	5
280S	4, 6, 8	547	387	248	75	M20X42	140	125	7.5	20	67.5	79.5	662	2-M63X1.5	982	22	842	355.5	218	500	450	550	18.5	5
280M	2	547	387	248	65	M20X42	140	125	7.5	18	58	69	662	2-M63X1.5	1033	22	893	355.5	218	500	450	550	18.5	5
280M	4, 6, 8	547	387	248	75	M20X42	140	125	7.5	20	67.5	79.5	662	2-M63X1.5	1033	22	893	355.5	218	500	450	550	18.5	5
315S	2	620	527	320	65	M20X42	140	125	7.5	18	58	69	857	2-M63X1.5	1194	22	1054	397	280	600	550	660	24	6
315S	4, 6, 8, 10	620	527	320	80	M20X42	170	160	5	22	71	85	857	2-M63X1.5	1224	22	1054	427	280	600	550	660	24	6
315M	2	620	527	320	65	M20X42	140	125	7.5	18	58	69	857	2-M63X1.5	1304	22	1164	397	280	600	550	660	24	6
315M	4, 6, 8, 10	620	527	320	80	M20X42	170	160	5	22	71	85	857	2-M63X1.5	1334	22	1164	427	280	600	550	660	24	6
315L	2	620	527	320	65	M20X42	140	125	7.5	18	58	69	857	2-M63X1.5	1304	22	1164	397	280	600	550	660	24	6
315L	4, 6, 8, 10	620	527	320	80	M20X42	170	160	5	22	71	85	857	2-M63X1.5	1334	22	1164	427	280	600	550	660	24	6
355M	2	698	642	380	75	M20X50	140	130	5	20	67.5	79.5	1042	2-M63X1.5	1486	25	1346	414	330	740	680	800	24	6
355M	4, 6, 8, 10	698	642	380	95	M24X50	170	160	5	25	86	100	1042	2-M63X1.5	1516	25	1346	444	330	740	680	800	24	6
355L	2	698	642	380	75	M20X50	140	130	5	20	67.5	79.5	1042	2-M63X1.5	1486	25	1346	414	330	740	680	800	24	6
355L	4, 6, 8, 10	698	642	380	95	M24X50	170	160	5	25	86	100	1042	2-M63X1.5	1516	25	1346	444	330	740	680	800	24	6

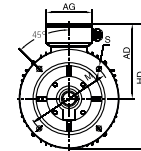
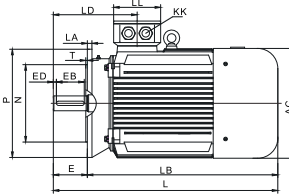
# YE3 MOTOR



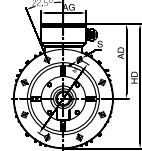
## YE3 MOUNTING AND OVERALL DIMENSIONS IM B35 H63-355



80-112



160-200



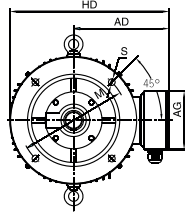
225-355

TYPE	POLE	A	AA	AB	AC	AD	AG	B	BB	C	D	DH	E	EB	ED	F	G	GA	H	HA	K	KK	L	LA	LB	LD	LL	M	N	P	S	T
63	2, 4, 6	100	30	130	120	113	94	80	110	40	11	M4X12	23	16	3.5	4	8.5	12.5	63	8	4-Ø7	1-M20X1.5	217	10	194	80.5	94	115	95	140	10	3
71	2, 4, 6	112	32	144	136	119	94	90	120	45	14	M5X12	30	25	2.5	5	11	16	71	8	4-Ø7	1-M20X1.5	242	10	212	99	94	130	110	160	10	3.5
80	2, 4, 6, 8	125	34	160	167	147	102	100	150	50	19	M6X16	40	30	5	6	15.5	21.5	80	10	4-Ø10	1-M25X1.5	304	12	264	112	102	165	130	200	12	3.5
90S	2, 4, 6, 8	140	36	176	182.4	154.5	102	100	161	56	24	M8X19	50	40	5	8	20	27	90	12	4-Ø10	1-M25X1.5	336	12	286	130	102	165	130	200	12	3.5
90L	2, 4, 6, 8	140	36	176	182.4	154.5	102	125	186	56	24	M8X19	50	40	5	8	20	27	90	12	4-Ø10	1-M25X1.5	361	12	311	130	102	165	130	200	12	3.5
100L	2, 4, 6, 8	160	40	200	205.4	166	102	140	213	63	28	M10X22	60	50	5	8	24	31	100	14	4-Ø12	1-M32X1.5	406	13	346	139	102	215	180	250	14.5	4
112M	2, 4, 6, 8	190	50	240	230	188	118	140	188	70	28	M10X22	60	50	5	8	24	31	112	15	4-Ø12	2-M32X1.5	394	14	334	147	110	215	180	250	14.5	4
132S	2, 4, 6, 8	216	55	262	258.4	203	118	140	186	89	38	M12X28	80	65	7.5	10	33	41	132	18	4-Ø12	2-M32X1.5	438	14	390	172	110	265	230	300	14.5	4
132M	4, 6, 8	216	55	262	258.4	203	118	178	224	89	38	M12X28	80	65	7.5	10	33	41	132	18	4-Ø12	2-M32X1.5	476	14	428	172	110	265	230	300	14.5	4
160M	2, 4, 6, 8	254	65	314	314	251	162	210	260	108	42	M16X36	110	90	10	12	37	45	160	20	4-Ø14.5	2-M40X1.5	608	15	498	256	152	300	250	350	18.5	5
160L	2, 4, 6, 8	254	65	314	314	251	162	254	304	108	42	M16X36	110	90	10	12	37	45	160	20	4-Ø14.5	2-M40X1.5	652	15	542	256	152	300	250	350	18.5	5
180M	2, 4, 8	279	70	349	355	267	162	241	311	121	48	M16X36	110	90	10	14	42.5	51.5	180	22	4-Ø14.5	2-M40X1.5	688	15	578	271	152	300	250	350	18.5	5
180L	4, 6, 8	279	70	349	355	267	162	279	349	121	48	M16X36	110	90	10	14	42.5	51.5	180	22	4-Ø14.5	2-M40X1.5	726	15	616	271	152	300	250	350	18.5	5
200L	2, 4, 6, 8	318	70	388	397	299	210	305	369	133	55	M20X42	110	100	5	16	49	59	200	25	4-Ø18.5	2-M50X1.5	779	17	669	296	190	350	300	400	18.5	5
225S	4, 8	356	75	431	446	322	210	286	368	149	60	M20X42	140	125	7.5	18	53	64	225	28	4-Ø18.5	2-M50X1.5	824	20	684	329	190	400	350	450	18.5	5
225M	2	356	75	431	446	322	210	311	393	149	55	M20X42	110	100	5	16	49	59	225	28	4-Ø18.5	2-M50X1.5	819	20	709	299	190	400	350	450	18.5	5
225M	4, 6, 8	356	75	431	446	322	210	311	393	149	60	M20X42	140	125	7.5	18	53	64	225	28	4-Ø18.5	2-M50X1.5	849	20	709	329	190	400	350	450	18.5	5
250M	2	406	80	484	485	358	248	349	445	168	60	M20X42	140	125	7.5	18	53	64	250	30	4-Ø24	2-M63X1.5	910	22	770	347	218	500	450	550	18.5	5
250M	4, 6, 8	406	80	484	485	358	248	349	445	168	65	M20X42	140	125	7.5	18	58	69	250	30	4-Ø24	2-M63X1.5	910	22	770	347	218	500	450	550	18.5	5
280S	2	457	85	542	547	387	248	368	485	190	65	M20X42	140	125	7.5	18	58	69	280	35	4-Ø24	2-M63X1.5	982	22	842	355.5	218	500	450	550	18.5	5
280S	4, 6, 8	457	85	542	547	387	248	368	485	190	75	M20X42	140	125	7.5	20	67.5	79.5	280	35	4-Ø24	2-M63X1.5	982	22	842	355.5	218	500	450	550	18.5	5
280M	2	457	85	542	547	387	248	419	536	190	65	M20X42	140	125	7.5	18	58	69	280	35	4-Ø24	2-M63X1.5	1033	22	893	355.5	218	500	450	550	18.5	5
280M	4, 6, 8	457	85	542	547	387	248	419	536	190	75	M20X42	140	125	7.5	20	67.5	79.5	280	35	4-Ø24	2-M63X1.5	1033	22	893	355.5	218	500	450	550	18.5	5
315S	2	508	120	628	620	527	320	406	570	216	65	M20X42	140	125	7.5	18	58	69	315	45	4-Ø28	2-M63X1.5	1194	22	1054	397	280	600	550	660	24	6
315S	4, 6, 8, 10	508	120	628	620	527	320	406	570	216	80	M20X42	170	160	5	22	71	85	315	45	4-Ø28	2-M63X1.5	1224	22	1054	427	280	600	550	660	24	6
315M	2	508	120	628	620	527	320	457	680	216	65	M20X42	140	125	7.5	18	58	69	315	45	4-Ø28	2-M63X1.5	1304	22	1164	397	280	600	550	660	24	6
315M	4, 6, 8, 10	508	120	628	620	527	320	457	680	216	80	M20X42	170	160	5	22	71	85	315	45	4-Ø28	2-M63X1.5	1334	22	1164	427	280	600	550	660	24	6
315L	2	508	120	628	620	527	320	508	680	216	65	M20X42	140	125	7.5	18	58	69	315	45	4-Ø28	2-M63X1.5	1304	22	1164	397	280	600	550	660	24	6
315L	4, 6, 8, 10	508	120	628	620	527	320	508	680	216	80	M20X42	170	160	5	22	71	85	315	45	4-Ø28	2-M63X1.5	1334	22	1164	427	280	600	550	660	24	6
355M	2	610	116	726	698	642	380	560	750	254	75	M20X50	140	130	5	20	67.5	79.5	355	52	6-Ø28	2-M63X1.5	1486	25	1346	414	330	740	680	800	24	6
355M	4, 6, 8, 10	610	116	726	698	642	380	560	750	254	95	M24X50	170	160	5	25	86	100	355	52	6-Ø28	2-M63X1.5	1516	25	1346	444	330	740	680	800	24	6
355L	2	610	116	726	698	642	380	630	750	254	75	M20X50	140	130	5	20	67.5	79.5	355	52	6-Ø28	2-M63X1.5	1486	25	1346	414	330	740	680	800	24	6
355L	4, 6, 8, 10	610	116	726	698	642	380	630	750	254	95	M24X50	170	160	5	25	86	100	355	52	6-Ø28	2-M63X1.5	1516	25	1346	444	330	740	680	800	24	6

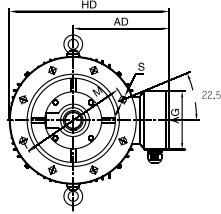
# YE3 MOTOR



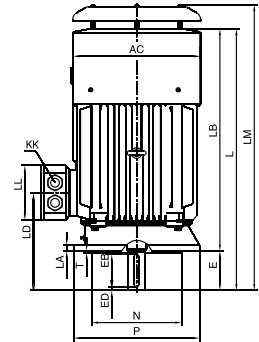
## YE3 MOUNTING AND OVERALL DIMENSIONS IM V1 H160-355



160-200



225-355



TYPE	POLE	AC	AD	AG	D	DH	E	EB	ED	F	G	GA	HD	KK	L	LA	LB	LD	LL	LM	M	N	P	S	T
160M	2, 4, 6, 8	314	251	162	42	M16X36	110	90	10	12	37	45	426	2-M40X1.5	590	15	498	256	152	650	300	250	350	18.5	5
160L	2, 4, 6, 8	314	251	162	42	M16X36	110	90	10	12	37	45	426	2-M40X1.5	645	15	542	256	152	707	300	250	350	18.5	5
180M	2, 4, 8	355	267	162	48	M16X36	110	90	10	14	42.5	51.5	444.5	2-M40X1.5	652	15	578	271	152	724	300	250	350	18.5	5
180L	4, 6, 8	355	267	162	48	M16X36	110	90	10	14	42.5	51.5	444.5	2-M40X1.5	690	15	616	271	152	762	300	250	350	18.5	5
200L	2, 4, 6, 8	397	299	210	55	M20X42	110	100	5	16	49	59	499	2-M50X1.5	746	17	669	296	190	820	350	300	400	18.5	5
225S	4, 8	446	322	210	60	M20X42	140	125	7.5	18	53	64	547	2-M50X1.5	780	20	684	329	190	855	400	350	450	18.5	5
225M	2	446	322	210	55	M20X42	110	100	5	16	49	59	547	2-M50X1.5	810	20	709	299	190	863	400	350	450	18.5	5
225M	4, 6, 8	446	322	210	60	M20X42	140	125	7.5	18	53	64	547	2-M50X1.5	810	20	709	329	190	863	400	350	450	18.5	5
250M	2	485	358	248	60	M20X42	140	125	7.5	18	53	64	633	2-M63X1.5	900	22	770	347	218	976	500	450	550	18.5	5
250M	4, 6, 8	485	358	248	65	M20X42	140	125	7.5	18	58	69	633	2-M63X1.5	900	22	770	347	218	976	500	450	550	18.5	5
280S	2	547	387	248	65	M20X42	140	125	7.5	18	58	69	662	2-M63X1.5	961	22	842	355.5	218	1038	500	450	550	18.5	5
280S	4, 6, 8	547	387	248	75	M20X42	140	125	7.5	20	67.5	79.5	662	2-M63X1.5	961	22	842	355.5	218	1038	500	450	550	18.5	5
280M	2	547	387	248	65	M20X42	140	125	7.5	18	58	69	662	2-M63X1.5	1012	22	893	355.5	218	1090	500	450	550	18.5	5
280M	4, 6, 8	547	387	248	75	M20X42	140	125	7.5	20	67.5	79.5	662	2-M63X1.5	1012	22	893	355.5	218	1090	500	450	550	18.5	5
315S	2	620	527	284	65	M20X42	140	125	7.5	18	58	69	857	2-M63X1.5	1194	22	1054	397	280	1275	600	550	660	24	6
315S	4, 6, 8, 10	620	527	284	80	M20X42	170	160	5	22	71	85	857	2-M63X1.5	1224	22	1054	427	280	1305	600	550	660	24	6
315M	2	620	527	284	65	M20X42	140	125	7.5	18	58	69	857	2-M63X1.5	1304	22	1164	397	280	1385	600	550	660	24	6
315M	4, 6, 8, 10	620	527	284	80	M20X42	170	160	5	22	71	85	857	2-M63X1.5	1334	22	1164	427	280	1415	600	550	660	24	6
315L	2	620	527	284	65	M20X42	140	125	7.5	18	58	69	857	2-M63X1.5	1304	22	1164	397	280	1385	600	550	660	24	6
315L	4, 6, 8, 10	620	527	284	80	M20X42	170	160	5	22	71	85	857	2-M63X1.5	1334	22	1164	427	280	1415	600	550	660	24	6
355M	2	698	642	380	75	M20X50	140	130	5	20	67.5	79.5	1042	2-M63X1.5	1486	25	1346	414	330	1567	740	680	800	24	6
355M	4, 6, 8, 10	698	642	380	95	M24X50	170	160	5	25	86	100	1042	2-M63X1.5	1516	25	1346	444	330	1597	740	680	800	24	6
355L	2	698	642	380	75	M20X50	140	130	5	20	67.5	79.5	1042	2-M63X1.5	1486	25	1346	414	330	1567	740	680	800	24	6
355L	4, 6, 8, 10	698	642	380	95	M24X50	170	160	5	25	86	100	1042	2-M63X1.5	1516	25	1346	444	330	1597	740	680	800	24	6

**THOMPSON**

**Electric Industries** INC



**[www.thompstonelectricindustries.com](http://www.thompstonelectricindustries.com)**

**MANUFACTURING FOR WORLD PRESENCE**

[info@thompstonelectricindustries.com](mailto:info@thompstonelectricindustries.com)

Blair Rd, Houston, Texas, USA